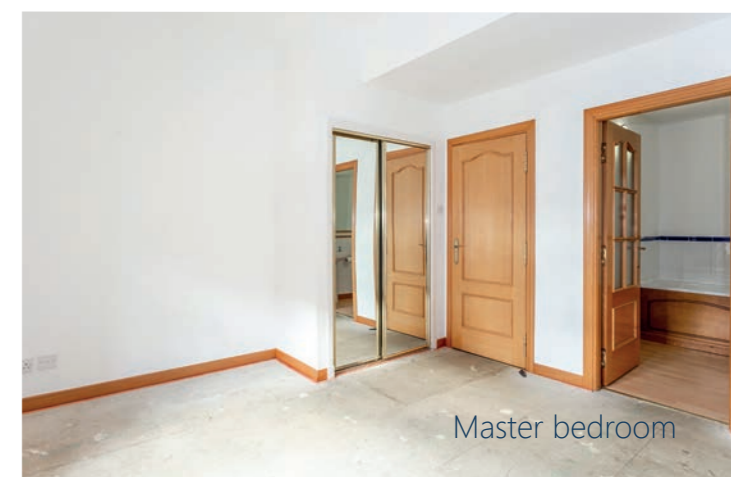




148/11 Commercial Street
Edinburgh
EH6 6LB



1st Floor Flat



accommodation

- Entrance hall
- Sitting room with twin aspect
- Fitted kitchen
- Master bedroom with fitted wardrobe & en suite bathroom
- Second double bedroom
- Shower room

features

- Converted warehouse just a short walk from Ocean Terminal
- Carpeted communal entrance foyer
- Residents parking
- Electric heating
- Security entryphone

description

Stylish 1st floor flat, in a popular converted warehouse in the heart of the Shore area of Leith. With a range of boutique bars, restaurants and shops all within walking distance, this is a prime location within the City. The accommodation comprises an entrance hall with two large storage cupboards, one housing the washing machine, a bright sitting room/dining room with twin windows to the front and side, breakfasting kitchen, a master bedroom with fitted wardrobes and en suite bathroom, a second double bedroom with fitted wardrobe and shower room. The property benefits from electric heating, double glazing, security entry phone and residents' parking. Overall, this is a superb home which must be viewed to be fully appreciated.



EPC:
D



Home Report
Value: £240,000

Items to be included in the sale price:

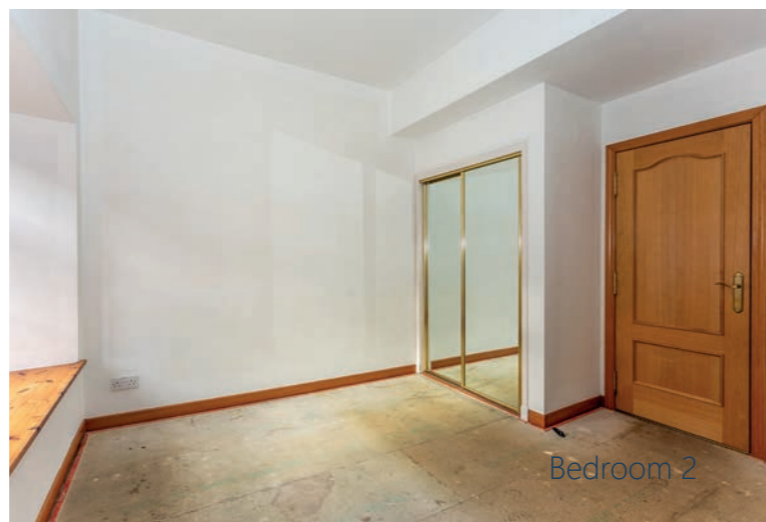
Flooring and light fittings. The integrated kitchen appliances are included but no warranty is given as to their working order.



Sitting Room



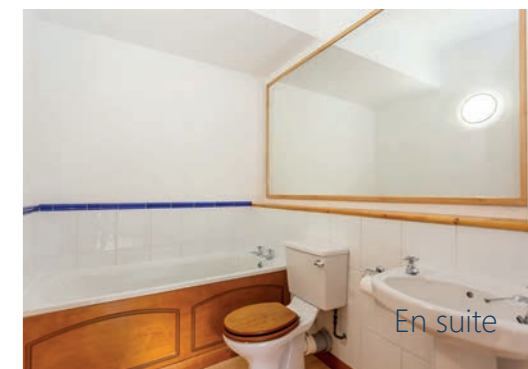
Master Bedroom



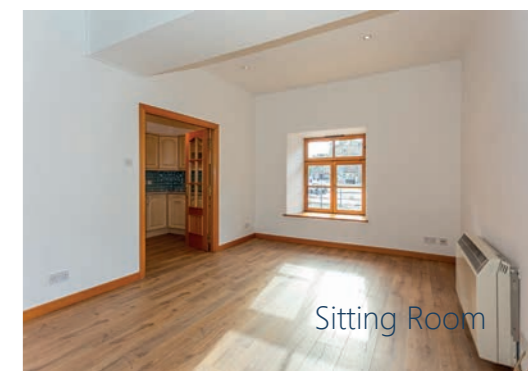
Bedroom 2



Bedroom 2



En suite



Sitting Room



cameron stephen & co.
14 constitution street,
edinburgh eh6 7bt
tel: 0131 555 1234 or 07483 361731
property@cameronstephen.co.uk
www.cameronstephen.co.uk
DX 550871 leith