

2 Alva Place,
Edinburgh
EH7 5AZ

cameron stephen
solicitors & estate agents



accommodation

- Entrance vestibule
- Sitting room
- Fitted kitchen
- Double bedroom
- Bathroom

features

- Wood floors
- Gas central heating
- Feature electric fire
- Cast iron bath
- Freshly decorated

description

Superb lower colony flat in the popular Abbeyhill area of the City. The accommodation comprises entrance vestibule and reception hall, sitting room with sanded and varnished floorboards and feature electric fire, fitted kitchen with integrated appliances and ceramic sink, good sized double bedroom with sanded and varnished floors and shelved press cupboard and bathroom with cast iron bath and thermostatic shower fitting over. The property benefits from gas central heating and it's own private front garden. Overall this is a charming property and viewing is highly recommended.

further information

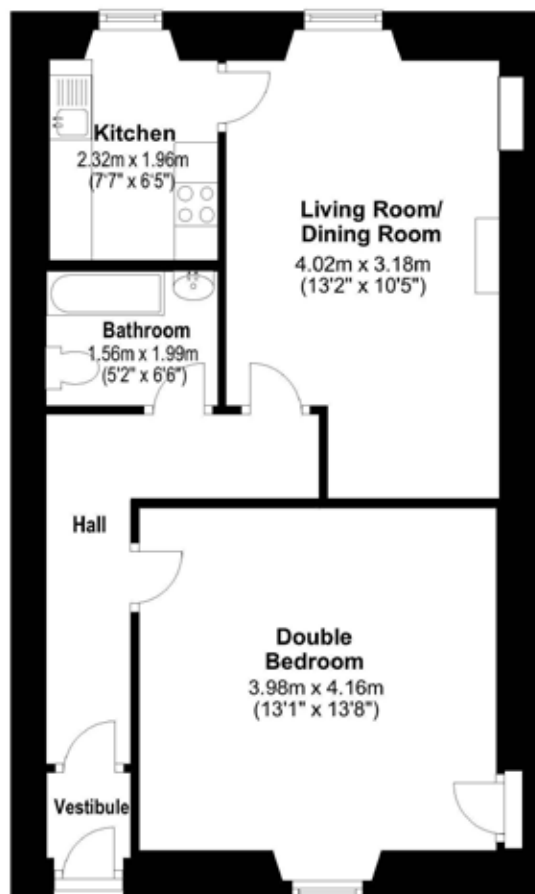
EPC Band:

Home Report Value £

Items to be included: Flooring, light fittings, kitchen appliances, curtains, blinds and the garden shed.

asking price & viewing arrangements

For information on the asking price and viewing arrangements, please contact us on 0131 555 1234 or visit our website at www.cameronstephen.co.uk



espc

cameron stephen & co

14 constitution street,
edinburgh eh6 7bt
0131 555 1234 fax: 0131 555 2299
property@cameronstephen.co.uk
www.cameronstephen.co.uk